



We offer a wide range of Stainless Steel Brackets, Supports, Fasteners & Strut to suit all of our cable management systems. Popular products include our Tray Wall Brackets, ideal for use with Cable Tray and Wire Basket Tray, our Stirrup Hanger Brackets, perfect for use with Trunking systems, and our wide range of Strut Supports.

Benefits checklist

- ✓ Fully compatible with our Stainless Steel Trunking, Cable Tray, Wire Basket Tray and Conduit Systems.
- ✓ Over 40 styles of brackets and supports in stock for immediate despatch.
- ✓ Over 1 million Stainless Steel Fasteners in stock, in a variety of sizes and styles.
- ✓ Long life / durable.
- ✓ Corrosion resistant.

New Fasteners Added

Following our customer feedback, we have added a wide range of additional fasteners and fixings to complement our existing product ranges:

- Roofing Bolts & Square Nuts
- Threaded Rod / Studding Connectors
- Cup Head Square / Coach Bolts
- Hexagon, Flange, Nyloc & Dome Nuts
- Flat, Spring & Penny Washers
- Wood Screws
- Machine Screws
- Hexagon Set Screws
- Panhead Self Tappers

Ranges of Accessories



Brackets & Supports
Pages 71-72



Fasteners & Threaded Rod
Pages 73-74



Strut Support Solutions
Pages 75-76

Why Electrix?



Huge Stocks - Quick Delivery

Over 400,000 standard products in stock for same day worldwide despatch and a 7-day turnaround on Made-to-Order products.



Bespoke Design Service

Not part of our standard range? No problem! We can work with you closely to design bespoke products that meet your exact requirements.



Worldwide Market Leader

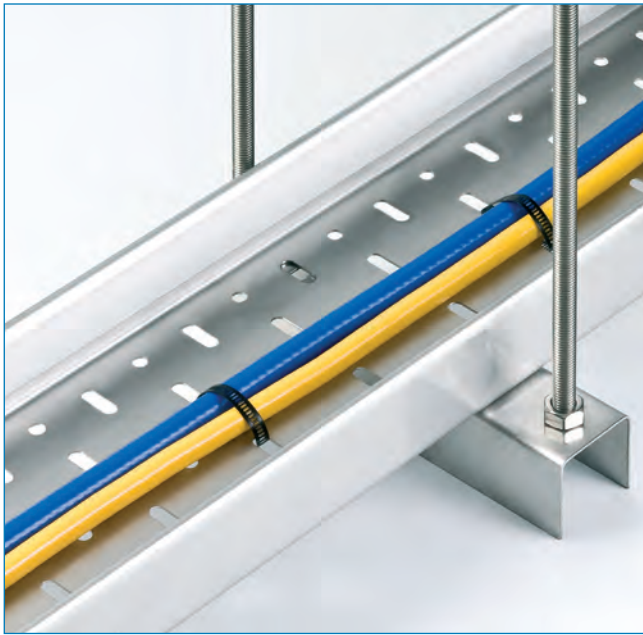
Regularly specified by internationally recognised companies making us the Processing Industry's preferred supplier of Stainless Steel Cable Management Systems.



Large Discounts - Buy Direct

We offer large discounts when you buy direct. Browse the brochure and contact us to request a quote.

Electrix Stainless Steel Solutions



Channel Hanger Bracket | 1.4404 - 316

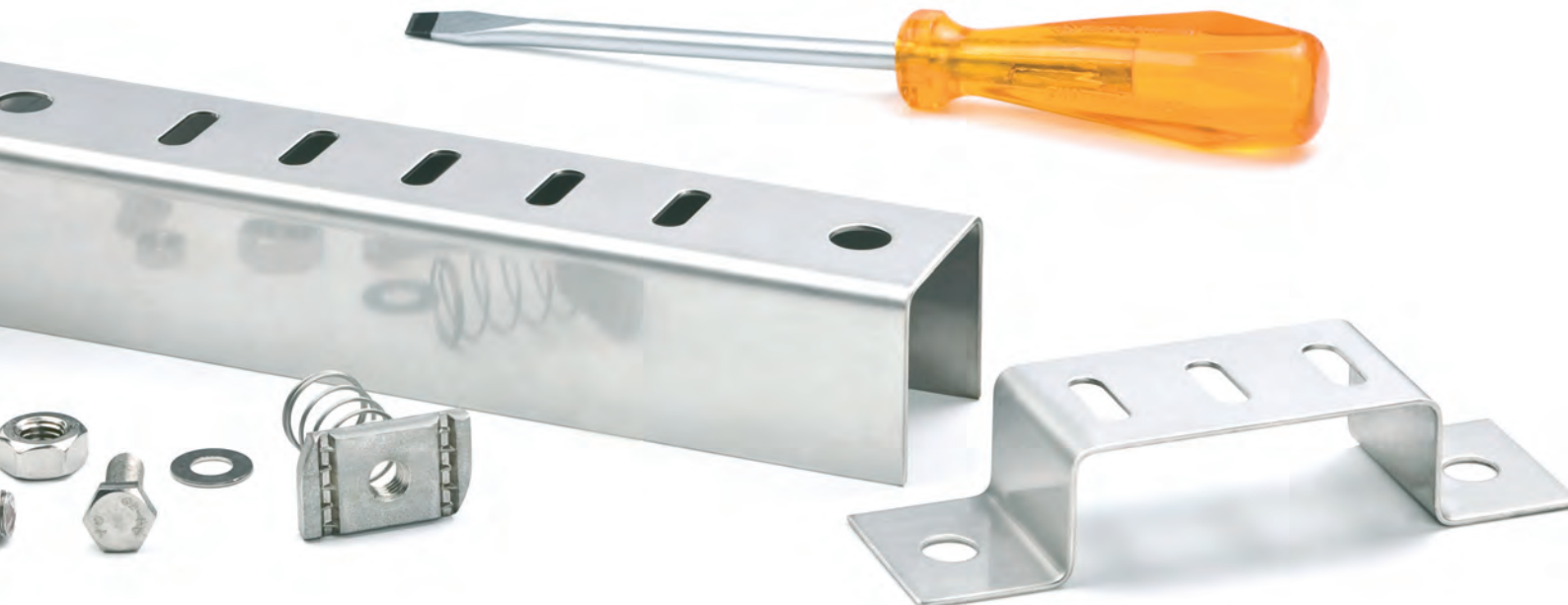


H (mm)	Fixing Centres (mm)	Part No.
41	125	CHB-D 76 †
41	150	CHB-D 102 †
41	190	CHB-D 152 †
41	267	CHB-D 230 †
41	343	CHB-D 305 †
41	497	CHB-D 460 †
41	647	CHB-D 610 †

Stirrup Hanger Bracket | 1.4301 - 304

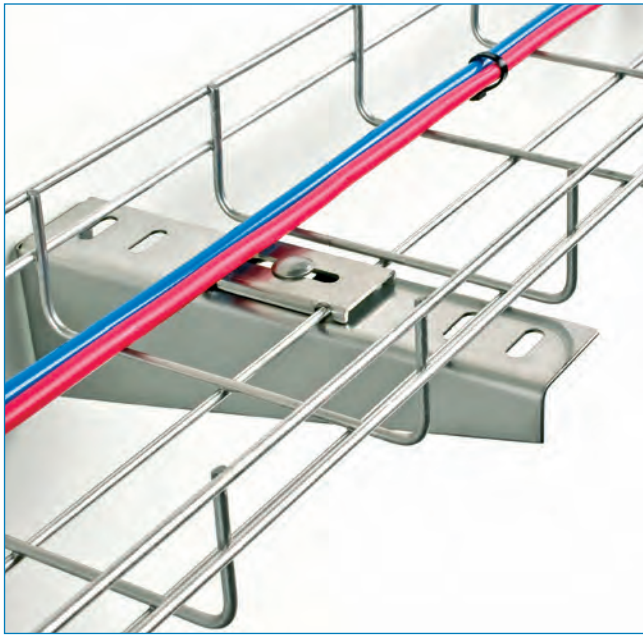


For Trunking Size (mm)	Polished Part No.	Satin Part No.
50 x 50	SHB-P 51	SHB-S 51
75 x 75	SHB-P 76	SHB-S 76
100 x 50	SHB-P 102	SHB-S 102
100 x 100	SHB-P 102	SHB-S 102
150 x 100	SHB-P 152	SHB-S 152 †
150 x 150	SHB-P 152	SHB-S 152 †



Stainless Steel Brackets & Supports

5



Tray Wall Bracket



Size (mm)		Material Type	Part No.
H	L		
53	52	1.4404 - 316	TWB-D 51
53	77	1.4404 - 316	TWB-D 76
53	102	1.4404 - 316	TWB-D 102
53	152	1.4404 - 316	TWB-D 152
72	227	1.4404 - 316	TWB-D 230 †
96	302	1.4404 - 316	TWB-D 305 †
96	463	1.4301 - 304	TWB-D 460 304 †
180	616	1.4301 - 304	TWB-D 610 304 †

Tray Support Bracket



Size (mm)		Material Type	Part No.
H	L		
28	51	1.4404 - 316	TSB-D 51-28
28	76	1.4404 - 316	TSB-D 76-28
28	102	1.4404 - 316	TSB-D 102-28
28	152	1.4404 - 316	TSB-D 152-28
28	230	1.4404 - 316	TSB-D 230-28
28	305	1.4404 - 316	TSB-D 305-28 †
28	460	1.4301 - 304	TSB-D 460-28 304 †

50	76	1.4404 - 316	TSB-D 76-50
50	102	1.4404 - 316	TSB-D 102-50
50	152	1.4404 - 316	TSB-D 152-50
50	230	1.4404 - 316	TSB-D 230-50 †
50	305	1.4404 - 316	TSB-D 305-50 †
86	460	1.4301 - 304	TSB-D 460-86 304 †
86	610	1.4301 - 304	TSB-D 610-86 304 †

NEW

C-Support



W1 x W2 x H (mm)	Thickness (mm)	1.4301 - 304 Part No.
115 x 115 x 155	3.0	C-SUPPORT 100 304
115 x 165 x 155	4.0	C-SUPPORT 150 304
115 x 215 x 155	4.0	C-SUPPORT 200 304

Universal support suitable for Tray, Trunking & Conduit installations

NEW

L-Support



W x H (mm)	Thickness (mm)	1.4301 - 304 Part No.
115 x 152	3.0	L-SUPPORT 100 304
165 x 152	4.0	L-SUPPORT 150 304
215 x 152	4.0	L-SUPPORT 200 304

Universal support suitable for Tray, Trunking & Conduit installations

NEW

Universal Support for Walls & Floors



Width (mm)	Spacing (mm)	1.4301 - 304 Part No.	Width (mm)	Spacing (mm)	1.4301 - 304 Part No.	Width (mm)	Spacing (mm)	1.4301 - 304 Part No.
75	25	USB 75-25 304	75	50	USB 75-50 304	75	100	USB 75-100 304
100	25	USB 100-25 304	100	50	USB 100-50 304	100	100	USB 100-100 304
150	25	USB 150-25 304	150	50	USB 150-50 304	150	100	USB 150-100 304
200	25	USB 200-25 304	200	50	USB 200-50 304	200	100	USB 200-100 304
300	25	USB 300-25 304	300	50	USB 300-50 304	300	100	USB 300-100 304

The extra deep spacing assists the washdown process • Acts as a wall or floor mounting support
Supplied with Cage Nut(s) • Additional fixing slots (15 x 7 mm) on widths 100-300 (mm)

Electrix Stainless Steel Solutions

Mushroom Head Screw Kit



Qty	Description	Part No.
100	M6 x 8 Mushroom Head Screw & Nut (A2 - 304)	M6-8 MH N A2 x 100
100	M6 x 10 Mushroom Head Screw & Nut (A2 - 304)	M6-10 MH N A2 x 100

Panhead Screw Kit



Qty	Description	Part No.
100	M6 x 10 Panhead Screw & Nut (A4 - 316)	M6-10 PH N A4 x 100
100	M6 x 10 Panhead Screw, Nut & Washer (A4 - 316)	M6-10 PH N W A4 x 100

NEW

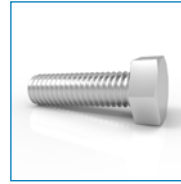
Slotted Panhead Screw



Qty	Description	Part No.
50	M4 x 8 Slotted Panhead Screw (A4 - 316)	M4-8 SLP A4 x 50
50	M5 x 10 Slotted Panhead Screw (A4 - 316)	M5-10 SLP A4 x 50
50	M6 x 12 Slotted Panhead Screw (A4 - 316)	M6-12 SLP A4 x 50
50	M6 x 16 Slotted Panhead Screw (A4 - 316)	M6-16 SLP A4 x 50
50	M6 x 20 Slotted Panhead Screw (A4 - 316)	M6-20 SLP A4 x 50
50	M6 x 30 Slotted Panhead Screw (A4 - 316)	M6-30 SLP A4 x 50
50	M8 x 30 Slotted Panhead Screw (A4 - 316)	M8-30 SLP A4 x 50

NEW

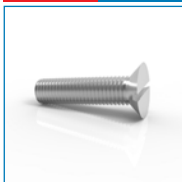
Hexagon Set Screw



Qty	Description	Part No.
50	M6 x 20 Hexagon Set Screw (A4 - 316)	M6-20 HSS A4 x 50
50	M6 x 30 Hexagon Set Screw (A4 - 316)	M6-30 HSS A4 x 50
50	M8 x 20 Hexagon Set Screw (A4 - 316)	M8-20 HSS A4 x 50
50	M8 x 30 Hexagon Set Screw (A4 - 316)	M8-30 HSS A4 x 50
50	M10 x 20 Hexagon Set Screw (A4 - 316)	M10-20 HSS A4 x 50
50	M10 x 30 Hexagon Set Screw (A4 - 316)	M10-30 HSS A4 x 50

NEW

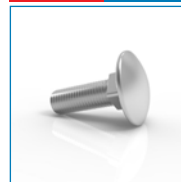
Countersunk Machine Screw



Qty	Description	Part No.
10	M5 x 16 Countersunk Machine Screw (A4 - 316)	M5-16 CSK A4 x 10
10	M5 x 20 Countersunk Machine Screw (A4 - 316)	M5-20 CSK A4 x 10
10	M5 x 40 Countersunk Machine Screw (A4 - 316)	M5-40 CSK A4 x 10
10	M5 x 60 Countersunk Machine Screw (A4 - 316)	M5-60 CSK A4 x 10

NEW

Cup Head Square / Coach Bolt



Qty	Description	Part No.
50	M6 x 20 Cup Head Square Coach Bolt (A4 - 316)	M6-20 CHS A4 x 50
50	M6 x 30 Cup Head Square Coach Bolt (A4 - 316)	M6-30 CHS A4 x 50
50	M8 x 20 Cup Head Square Coach Bolt (A4 - 316)	M8-20 CHS A4 x 50
50	M8 x 30 Cup Head Square Coach Bolt (A4 - 316)	M8-30 CHS A4 x 50

NEW

Penny Washer



Qty	Description	Part No.
50	M6 x 25 x 1.6 Penny Washer (A4 - 316)	M6-25 PENNY A4 x 50
50	M8 x 30 x 1.6 Penny Washer (A4 - 316)	M8-30 PENNY A4 x 50
50	M10 x 35 x 1.6 Penny Washer (A4 - 316)	M10-35 PENNY A4 x 50

NEW

Spring Washer



Qty	Description	Part No.
10	M5 Spring Washer (A4 - 316)	M5 SPR A4 x 10
50	M6 Spring Washer (A4 - 316)	M6 SPR A4 x 50
50	M8 Spring Washer (A4 - 316)	M8 SPR A4 x 50
50	M10 Spring Washer (A4 - 316)	M10 SPR A4 x 50

NEW

Nyloc Nut



Qty	Description	Part No.
50	M6 Nyloc Nut (A4 - 316)	M6 NYL A4 x 50
50	M8 Nyloc Nut (A4 - 316)	M8 NYL A4 x 50
50	M10 Nyloc Nut (A4 - 316)	M10 NYL A4 x 50

NEW


Square Roofing Nut





Qty	Description	Part No.
50	M6 Square Roofing Nut (A4 - 304)	M6 SQN A4 x 50
50	M8 Square Roofing Nut (A4 - 304)	M8 SQN A4 x 50


Stainless Steel Fasteners & Threaded Rod


5


Threaded Rod / Studding Lengths		
	Description	Part No.
	M6 Threaded Rod - 1 m (A4 - 316)	M6-1 ROD A4
	M8 Threaded Rod - 1 m (A4 - 316)	M8-1 ROD A4
	M8 Threaded Rod - 3 m (A4 - 316)	M8-3 ROD A4
	M10 Threaded Rod - 1 m (A4 - 316)	M10-1 ROD A4
	M10 Threaded Rod - 3 m (A2 - 304)	M10-3 ROD A2
	M10 Threaded Rod - 3 m (A4 - 316)	M10-3 ROD A4


NEW Threaded Rod / Studding Connector		
Qty	Description	Part No.
	10 M6 Threaded Rod Connector (A4 - 316)	M6 ROD CON A4 x 10
	10 M8 Threaded Rod Connector (A4 - 316)	M8 ROD CON A4 x 10
	10 M10 Threaded Rod Connector (A4 - 316)	M10 ROD CON A4 x 10


NEW Roofing Bolt		
Qty	Description	Part No.
	50 M6 x 8 Roofing Bolt (A2 - 304)	M6-8 RB A2 x 50
	50 M6 x 10 Roofing Bolt (A2 - 304)	M6-10 RB A2 x 50
	50 M6 x 25 Roofing Bolt (A2 - 304)	M6-25 RB A2 x 50
	50 M6 x 50 Roofing Bolt (A2 - 304)	M6-50 RB A2 x 50
	50 M6 x 100 Roofing Bolt (A2 - 304)	M6-100 RB A2 x 50
	50 M8 x 50 Roofing Bolt (A2 - 304)	M8-50 RB A2 x 50


NEW Countersunk Wood Screw		
Qty	Description	Part No.
	50 No. 8 x 40 Wood Screw (A4 - 316)	No. 8-40 CSKWS A4 x 50
	50 No. 8 x 50 Wood Screw (A4 - 316)	No. 8-50 CSKWS A4 x 50
	50 No. 8 x 65 Wood Screw (A4 - 316)	No. 8-65 CSKWS A4 x 50
	50 No. 10 x 40 Wood Screw (A4 - 316)	No. 10-40 CSKWS A4 x 50
	50 No. 10 x 50 Wood Screw (A4 - 316)	No. 10-50 CSKWS A4 x 50
	50 No. 10 x 65 Wood Screw (A4 - 316)	No. 10-65 CSKWS A4 x 50
	50 No. 10 x 75 Wood Screw (A4 - 316)	No. 10-75 CSKWS A4 x 50

NEW Panhead Self Tapper		
Qty	Description	Part No.
	50 No. 8 x 25 Self Tapping Screws (A4 - 316)	No. 8-25 PPHST A4 x 50
	50 No. 8 x 40 Self Tapping Screws (A4 - 316)	No. 8-40 PPHST A4 x 50
	50 No. 8 x 50 Self Tapping Screws (A4 - 316)	No. 8-50 PPHST A4 x 50

NEW Flat Washer		
Qty	Description	Part No.
	10 M5 Flat Washer (A4 - 316)	M5 FLAT A4 x 10
	50 M6 Flat Washer (A4 - 316)	M6 FLAT A4 x 50
	50 M8 Flat Washer (A4 - 316)	M8 FLAT A4 x 50
	50 M10 Flat Washer (A4 - 316)	M10 FLAT A4 x 50
	10 M20 Flat Washer (A4 - 316)	M20 FLAT A4 x 10
	10 M25 Flat Washer (A4 - 316)	M25 FLAT A4 x 10
	10 M32 Flat Washer (A4 - 316)	M32 FLAT A4 x 10
	10 M50 Flat Washer (A4 - 316)	M50 FLAT A4 x 10

NEW Flange Nut		
Qty	Description	Part No.
	50 M6 Flange Nut (A4 - 316)	M6 FLANGE A4 x 50
	50 M8 Flange Nut (A4 - 316)	M8 FLANGE A4 x 50
	50 M10 Flange Nut (A4 - 316)	M10 FLANGE A4 x 50

NEW Hexagon Nut		
Qty	Description	Part No.
	10 M5 Hexagon Nut (A4 - 316)	M5 HEX A4 x 10
	50 M6 Hexagon Nut (A4 - 316)	M6 HEX A4 x 50
	50 M8 Hexagon Nut (A4 - 316)	M8 HEX A4 x 50
	50 M10 Hexagon Nut (A4 - 316)	M10 HEX A4 x 50

NEW Dome Nut		
Qty	Description	Part No.
	50 M6 Dome Nut (A4 - 316)	M6 DOME A4 x 50
	50 M8 Dome Nut (A4 - 316)	M8 DOME A4 x 50
	50 M10 Dome Nut (A4 - 316)	M10 DOME A4 x 50

Large Discounts Available Next Day Delivery	
	Call, Fax or Request a Quote Online:
	 +44 (0) 1388 774455
	 +44 (0) 1388 777359
	 info@electrixinternational.com
	 www.electrixinternational.com

Electrix Stainless Steel Solutions

To complement our cable management systems we have increased our range of strut support solutions.

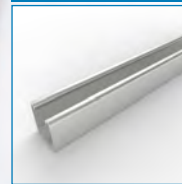
Our stainless steel strut support solutions are used in areas where corrosion resistant and high strength supports are required.

Specification

Material	1.4404 - 316 Stainless Steel (Lengths & accessories) 1.4301 - 304 Stainless Steel (Lengths only - accessories on request)
Finish	Dull (2B)
Lengths	3.0 m (Length) / 2.5 mm (Thickness)

Additional strut support parts are available on request.

Plain Strut Support Channel Length | 3.0 m Length



Size (mm)		Material Type	Part No.
W	H		
41	41	1.4404 - 316	STR 3M 41-41-2.5 PL 316
41	41	1.4301 - 304	STR 3M 41-41-2.5 PL 304
41	21	1.4301 - 304	STR 3M 41-21-2.5 PL 304

Slotted Strut Support Channel Length | 3.0 m Length



Size (mm)		Material Type	Part No.
W	H		
41	41	1.4404 - 316	STR 3M 41-41-2.5 SL 316
41	41	1.4301 - 304	STR 3M 41-41-2.5 SL 304
41	21	1.4301 - 304	STR 3M 41-21-2.5 SL 304

Strut Support Channel Lid



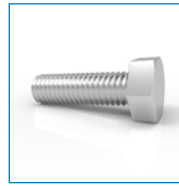
Description	1.4301 - 304 Part No.
Strut lid, 3.0 m long, to suit plain & slotted strut 1.4301 - 304 Stainless Steel	STR 3M 41 LID 304

Channel Spring Nut



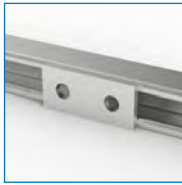
Qty	Size	For Strut Size (mm)	A4 - 316 Part No.
10	M6	41 x 41	STR M6-41 CSN A4 x 10
10	M8	41 x 41	STR M8-41 CSN A4 x 10
10	M10	41 x 41	STR M10-41 CSN A4 x 10
10	M6	41 x 21	STR M6-21 CSN A4 x 10
10	M8	41 x 21	STR M8-21 CSN A4 x 10
10	M10	41 x 21	STR M10-21 CSN A4 x 10

Hexagon Set Screw



Qty	Size	Thread Length (mm)	A4 - 316 Part No.
10	M6	20	M6-20 HSS A4 x 10
10	M8	20	M8-20 HSS A4 x 10
10	M10	20	M10-20 HSS A4 x 10

Plate Washer



Description	1.4404 - 316 Part No.
1 Hole - M8	STR M8 PW-1 316
1 Hole - M10	STR M10 PW-1 316
2 Holes - M10	STR M10 PW-2 316
4 Holes - M10	STR M10 PW-4 316

Base Plate



Dimensions	1.4404 - 316 Part No.
100 x 100 contact area	STR M10 BP 41-41 316

90° Flat Plate Fitting



Description	1.4404 - 316 Part No.
90 x 90 mm overall size with 14mm Ø holes	STR M10 FPB90-1 316

NEW

90° Angle Fitting



Description	1.4404 - 316 Part No.
With 2 x 14 mm Ø holes	STR M10 AB90-1 316
With 4 x 14 mm Ø holes	STR M10 AB90-2 316

90° Tee Flat Plate Fitting



Description	1.4404 - 316 Part No.
138 x 90 mm overall size with 14 mm Ø holes	STR M10 FPT90-1 316

Internal Splice



Description	1.4404 - 316 Part No.
305 mm long with 4 M6 x 10 Pan Head Screws	STR CO 41-41 316

Beam Window Bracket



Description	1.4404 - 316 Part No.
Pair of Window Brackets to suit 41 x 41 channel	STR BWB 41-41 316 x 2

Strut Channel Socket



Description	Part No.
To suit M10 Set Screw	STR M10 CH SOC